

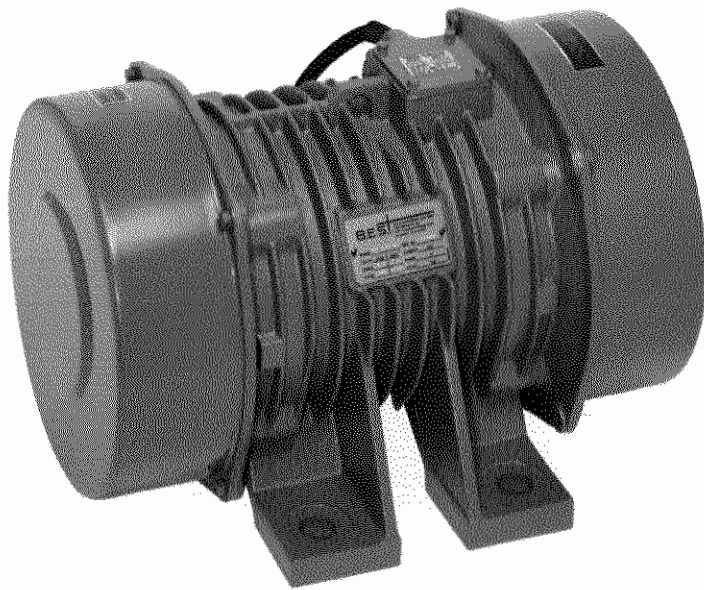
1200

RPM

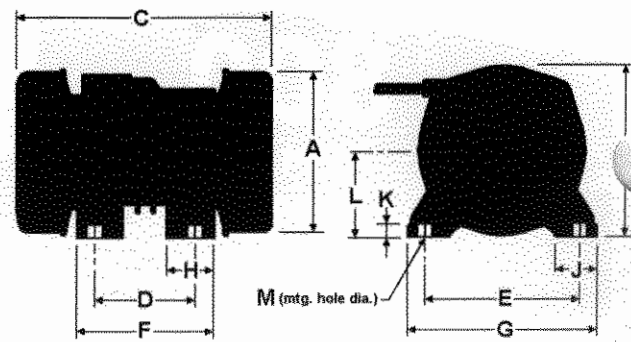
6-Pole, 230/460 Volt
3-Phase, 60 Cycle

Quick Facts

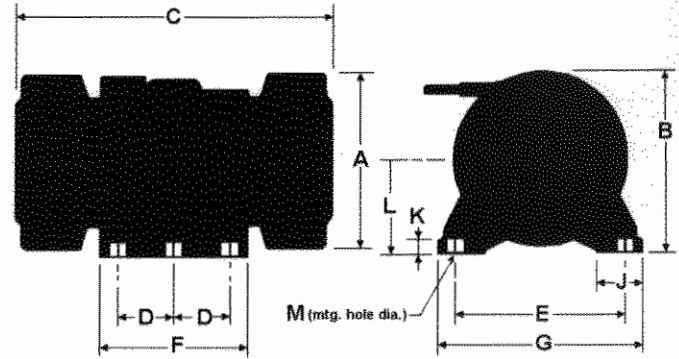
- For Large Feeders, Tables and Screeners
- High Amplitude, Low Frequency Design
- 1/4 HP to 17-1/2 HP Size Range
- 0-100% Force Adjustment
- Continuous Duty Rated at Maximum Force



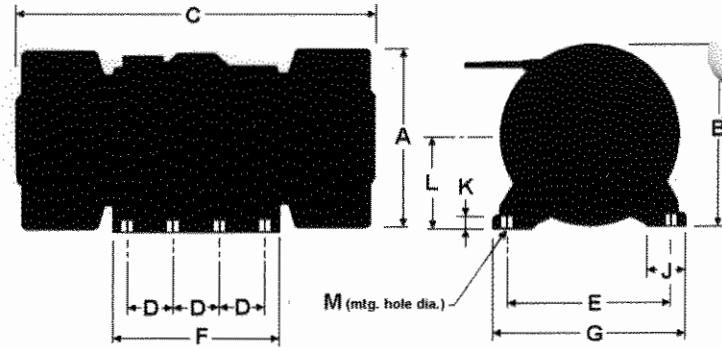
MODEL BE-3960-6 SHOWN ABOVE



Drawing A



Drawing B



Drawing C

MODEL	H.P.	MAX FORCE (lbs)+	DRWG. REF.	DIMENSIONS (inches)											FULL LOAD AMPS AT		WT. (lbs.)	UN-BALANCE (inch-lbs)	
				A	B	C	D	E	F	G	H	J	K	L	M	230v.			460v.
BE-660-6	1/4	660	A	6-11/16	7-11/16	11-7/16	3-15/16	6-19/64	5-1/8	7-1/2	1-25/32	1-19/32	15/32	3-5/8	9/16	1.1	0.65	49	17.2
BE-1100-6	1/2	1,100	A	7-1/2	8-9/32	13	4-21/64	7-3/32	5-29/32	8-21/32	2-3/16	1-31/32	19/32	4-1/32	23/32	1.9	1.3	71	28.6
BE-1980-6	4/5	1,980	A	8-7/8	9-15/32	14-9/16	5-33/64	8-21/32	7-1/2	10-5/8	2-9/16	2-3/8	23/32	4-23/32	13/16	2.7	1.6	104	51.5
BE-2860-6	1-1/10	2,860	A	9-21/32	10-1/4	15-3/8	5-33/64	9-29/64	7-7/8	11-13/16	2-31/32	2-3/4	13/16	5-1/8	1-1/32	3.7	2.1	139	74.4
BE-3960-6	1-1/2	3,960	A	10-7/16	11-1/32	17-23/32	5-29/32	10-15/64	8-9/32	12-19/32	3-5/32	2-3/4	13/16	5-19/32	1-1/32	4.8	2.7	185	103
BE-5280-6	2	5,280	A	11-5/8	12-19/32	19-11/16	6-11/16	12-13/64	9-15/32	14-31/32	3-3/4	3-11/32	1-1/8	6-7/32	1-5/16	6.1	3.3	265	137
BE-7480-6	3	7,480	A	13-19/32	14-3/8	22-7/16	8-21/32	13-25/32	11-13/16	16-15/16	---	3-15/16	1-5/16	7-9/32	1-17/32	7.9	4.2	364	195
BE-9900-6	4	9,900	A	13-19/32	14-3/8	24-13/16	8-21/32	13-25/32	11-13/16	16-15/16	---	3-15/16	1-5/16	7-9/32	1-17/32	10.8	5.7	448	258
BE-13200-6	5-1/3	13,200	B	15-9/16	16-11/32	24-13/16	4-59/64	14-31/32	13	18-1/8	---	4-5/32	1-5/16	8-9/32	1-17/32	13.4	7.4	567	343
BE-17600-6	7-1/2	17,600	B	15-9/16	16-11/32	28-47/64	4-59/64	14-31/32	13	18-1/8	---	4-5/32	1-5/16	8-9/32	1-17/32	18.5	10	662	458
BE-24200-6	10	24,200	B	18-5/16	18-23/32	29-15/16	5-33/64	17-21/64	14-9/16	20-7/8	---	4-15/16	1-1/2	9-15/32	1-25/32	27	15	924	630
BE-30800-6	12	30,800	C	20-9/32	20-11/16	34-21/32	5-33/64	18-29/32	20-3/32	22-7/16	---	4-15/16	1-1/2	10-7/16	1-25/32	31	17	1268	801
BE-36300-6	15	36,300	C	20-9/32	20-11/16	36-39/64	5-33/64	18-29/32	20-3/32	22-7/16	---	4-15/16	1-1/2	10-7/16	1-25/32	37	20	1389	944
BE-40700-6	17-1/2	40,700	C	22-1/16	22-7/16	36-7/32	5-33/64	20-15/32	20-3/32	24-1/32	---	4-15/16	1-1/2	11-7/16	1-25/32	44	22	1599	1059

- 1200 RPM motors are dual voltage, either 230 volt or 460 volt 3-phase. Specify voltage when ordering. 575 volt available on special order.
- All 1200 RPM motors are rated for continuous duty at the maximum force setting.

- 50 cycle motors are available for all 1200 RPM motors. Consult factory for pricing and availability.
- + Factory preset at 100% of maximum force. All units are totally adjustable by a simple setting change on the eccentric weights.